



## **Submersible Pumps AT**

Made in Sigmaringen, Germany



**Quality wins through !**



Offer benefits -  
Harvest profits with **Eisele**



Eisele-submersible pumps have been produced since 1972 and have demonstrated their worth a thousand times in agriculture and industry. The EISELE-submersible pumps which are impermeable to water pressure guarantee a high reliability and a long working life. The submersible pumps AT are produced in motor sizes from 3,0 up to 22,0 kW.

The pumping of slurry with litter, straw and food residues is carried out by a special formed inlet nozzle and a screw impeller with welded carbide tips (at the S-version).

## EISELE-submersible pumps AT are characterized by

- Simple installation
- Easy handling
- Simple repositioning
- Robust design
- High quality and reliable construction
- Low space requirements
- Safe dry running
- Low-maintenance
- High efficiency

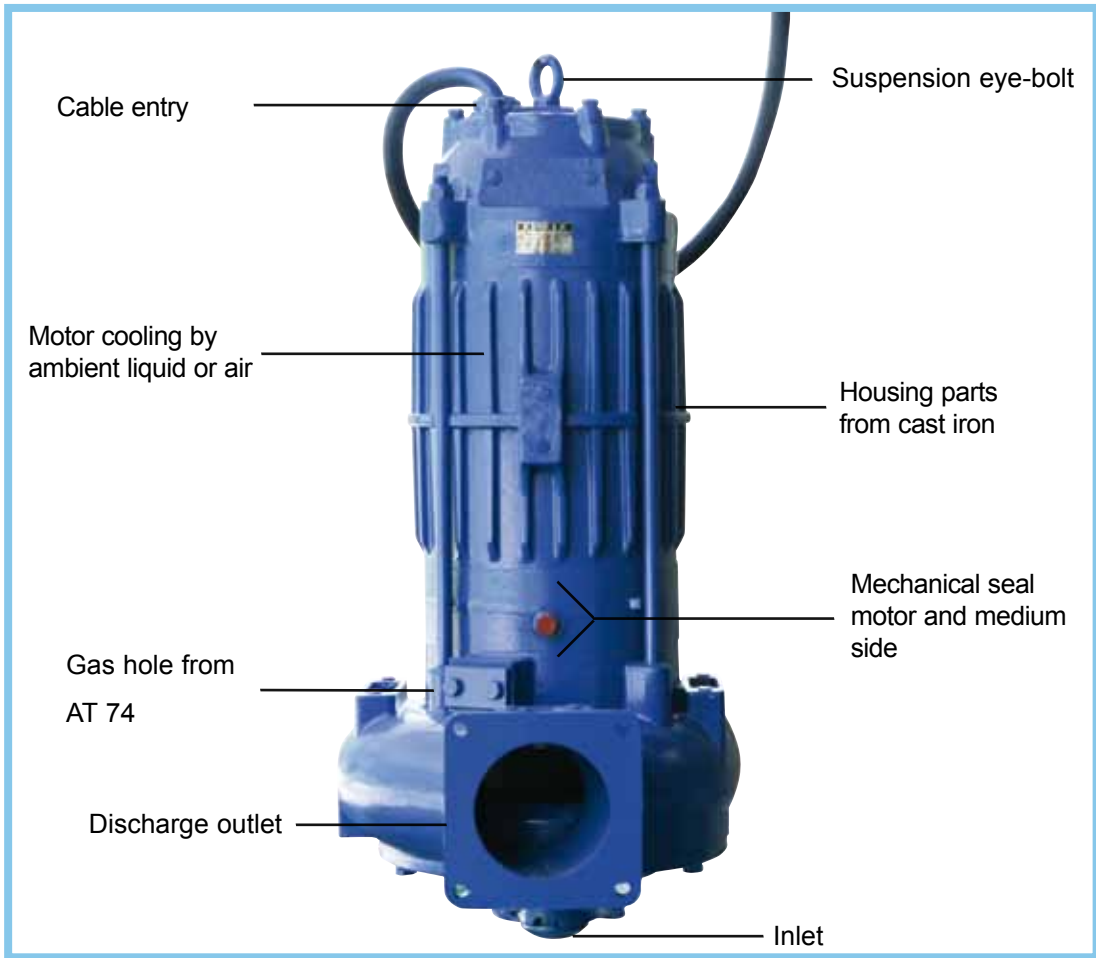


## Standard fabrication

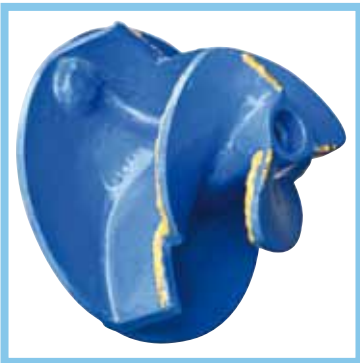
- Performance programme in stages from 3,0 to 22,0 kW
- Thermal protection of the winding by means of built-in thermal contacts
- Thermal control system in the switch gear
- Electronic leakage control in the switchgear / control electrode
- Stator thermal- and dampproof, insulation class F=155°C, protection type IP68
- Operating voltage 400 volt, 50 Hz, three phase
- Mechanical seal motor and medium side, oil bath lubricated
- Electric cable 8,0 m (without switch)
- Suspension eye-bolt
- Gas hole (AT 74-S to AT 304-S)
- Impeller:
  - non-clogging vortex impeller at AT 44-F and AT 54-F
  - open impeller (not for liquids with clogging, longfibre components) at AT 64-O to AT 104-O
  - screw impeller with tearing edges (for longfibre liquids) at AT 74-S to AT 304-S

## Materials

- Motor and pump housing: cast iron (GG)
- Shafts and screws: stainless steel or steel
- Impeller/screw impeller : nodular cast iron (GGG), vortex impeller: cast iron (GG)



Screw impeller with armoured edges as well as inlet nozzle ensure the tearing and crushing of litter and food residues.



Screw impeller



Vortex impeller



Open impeller



Offer benefits -  
Harvest profits with **Eisele**



## AT - pump dry installation



AT 84-0

AT 84-0 with piping system

AT 64-0



Type	Volt	kW/PS	RPM	Type of impeller
AT 44-F	400	3,0/4,0	1500	Vortex impeller
AT 64-O	400	4,6/6,3	1500	Open impeller
AT 84-O	400	6,0/8,2	1500	Open impeller



Better, more precise,  
more economic and environment-friendly



Submersible pump AT with rack (pedestal)



Submersible pump AT with bottom rail (duckfoot auto-coupling)



Submersible pump AT with mounting set (1)



Submersible pump AT with 3-way-valve and mixing nozzle



Submersible pump AT with bottom rail, guide rail and winch assembly



Offer benefits -  
Harvest profits with Eisele



## Submersible pump ATF on two-wheeled trolley



- Pump is completely pivotable
- Smooth running security winch with stainless steel wire rope
- EISELE-three-phase motor with installed thermal contacts
- Suitable for the connection with mixing nozzle, with injector aeration or further conduit systems with hose or pipe

## EISELE-submersible pump ATF 44-F / 54-F

- Switch with phase inverter
- Motor protection
- Thermal control system
- CEE-plug 16 A
- Electronic leakage control
- Basic equipment for pit depth 1,10 m
- Max. 3 extensions 1,10 m can be used
- Max. 2 extensions 1,10 m when mixing

## EISELE-submersible pump ATF 74-0 / 104-S

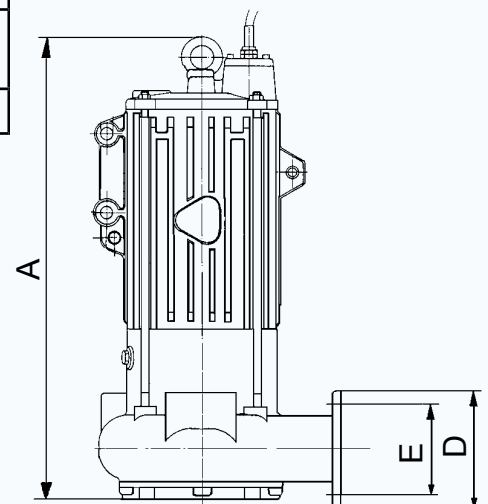
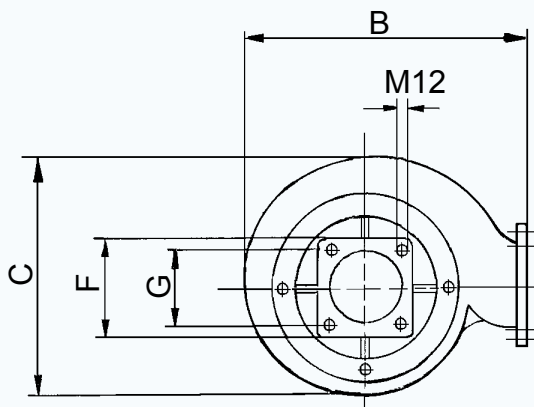
- Star-delta reverse switch with motor protection
- Thermal control system
- CEE-plug 32 A
- Electronic leakage control
- Basic equipment for pit depth 0,70 m
- Max. 4 extensions 1,10 m can be used

## Technical Data

De-sign	Type	Installation	Discha-ge outlet dia DN	Total head H max. m	Capa-city V max l/mim	Rated power kW/PS	Rated speed 1/min	Rated cur-rent A	We-ight appr. kg
1	AT 44-F	wet	75	8	2300	3,0 4,0	1440	6,3	76
1	AT 54-F	wet	75	9	2500	4,0 5,5	1426	7,8	76
1	AT 44-F	dry	75	8	2300	3,0 4,0	1440	6,3	76
2	AT 64-O	wet/dry	100	10	2400	4,6 6,3	1450	9,5	130
2	AT 84-O	wet/dry	100	13	2800	6,0 8,2	1450	12,5	130
3	AT 74-O	wet	100	12	3800	5,5 7,5	1450	10,9	130
3	AT 104-O	wet	100	17	4200	7,5 10,0	1450	15,2	138
4	AT 74-S	wet	100	11	4200	5,5 7,5	1450	10,9	133
4	AT 104-S	wet	100	13	4800	7,5 10,0	1450	15,2	141
5	AT 154-S	wet	125	18	5100	11,0 15,0	1460	21,2	196
5	AT 204-S	wet	125	20	5700	15,0 20,0	1460	28,9	210
6	AT 254-S	wet	125	22	6000	18,5 25,0	1474	38,0	220
6	AT 304-S	wet	125	25	6700	22,0 30,0	1468	43,0	225

Operating voltage 400V / 50 Hz

Dimensions in mm							
Design	A	B	C	D	E	F	G
1	600	315	270	150/150	120/120	150/150	120/120
2	760	427	370	180/180	120/120 150/150	150/150	120/120
3	760	427	370	180/180	120/120 150/150		
4	770	427	370	180/180	120/120 150/150		
5/6	915	490	420	180/180	150/150		





**Contractor and Sewage Pumps BS/BSD/BSG**

**Vertical Pumps VM/VG**

**Submersible Mixers GTWS**

**Slurry Spreaders**

**Tankers**

**P.T.O. Mixers ZP**

**Sewage Pumps VAG**

**Lobe Pumps DK**

**Submersible Pumps AT**

**Biogas Components**



Other products manufactured by our company:

- Mobile pumps VPF und GTF / DT (with submersible motor)
- Compact pump units VKM / VKG / VZM
- Vertical slurry pumps VRM / VRG
- slurry mixer Q • Hydraulic mixer HP
- Paddle mixer PRW
- Mixer ZQU / ZQUE for ring channel system
- Liquid manure pumps F / FS / HS
- Accessories for silo and pump installations
- Computers for slurry flow control
- Components for biogas plants
- Equipment for sewage plants • Silos

Franz Eisele u. Söhne GmbH u. Co.KG  
 Pumpen- und Maschinenfabrik  
 Hauptstraße 2-4 • D-72488 Sigmaringen-Laiz  
 Telefon +49(0)7571 / 109-0 • Fax +49(0)7571 / 109-88  
 info@eisele.de • www.eisele.de



Fe 0213b RC 07.13

**Data and Illustrations are not binding**