

Eisele

Vertical Pumps



**Quality
wins through**

Eisele - Vertical Pumps

Unsurpassed in quality and performance

- Capacity up to 12000 l/min
- Universally acclaimed
- Robust - reliable
- Mixing and pumping of thick slurry
- 5 years guarantee against rusting through on pump frame
- Rugged construction by frame design,
pipe wall 7.1 mm, little or no vibrations
- Simple operation
- Standard operating depths lengths in 0.5 m steps
up to 5.5 m , special lengths on request
- Stationary or mobile with a tractor lift attachment
- For pit openings \varnothing 0.7m or 0.5 x 0.6 m
(1541/2041) and 0.6 x 0.8 m (2541/3041)
- Safe dry running - highly wear resistant mechanical seal,
oilbath lubricated



Eisele

Type VM

- With EISELE- electrical motor
(heavy duty motor)
from 11,0 - 22,0 kW
- For pit depths from 1.5 - 6.0 m
- Capacity up to 6000 l/min (depends
on liquid and drymatter)
- Total head up to 24 m

- V-pump with 2 nozzles (additional price)
and chop blades (additional price)

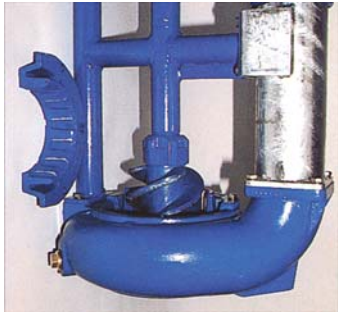
Type VG

- With EISELE-gearbox
- For tractor drive
- For pit depths from 1.5 - 6.0 m
- Capacity up to 12000 l/min
(depends on liquid and drymatter)
- Total head up to 47 m



Advantages of the

Eisele vertical pumps



Forced supply by screw impeller made of nodular cast iron with tearing edges of welded carbide tips.



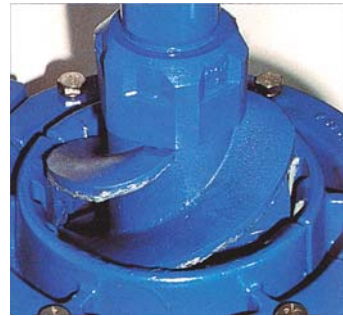
Mixing nozzle adjustable up (45°) and down (45°), therefore efficient destroying of floating crusts and sedimentations



Handling lever for mixing and pumping



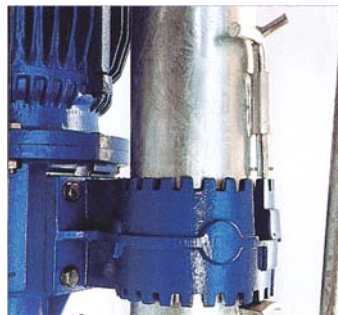
EISELE-gearbox with rear facing handling lever (on request)



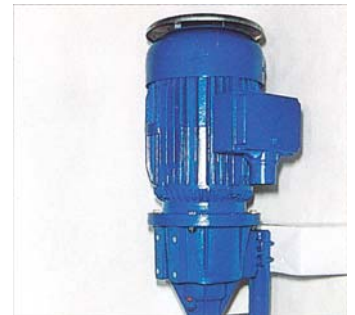
Inlet segments with 12 channels guaranty an efficient tear of lumps of feed and straw



Mixing nozzle with EISELE-three-way valve, 235° rotational direction



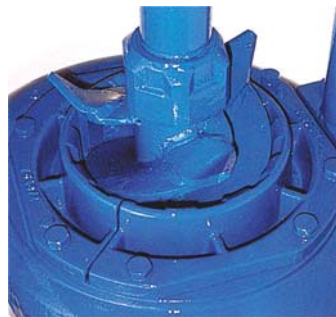
Mixing nozzle secured by a stop catch



EISELE-electrical motor (11,0/15,0/18,5/22,0 kW, heavy duty motor) with star-delta, reversing motor protective switch with CEE plugs or optional EISELE-electrical motor with terminal board



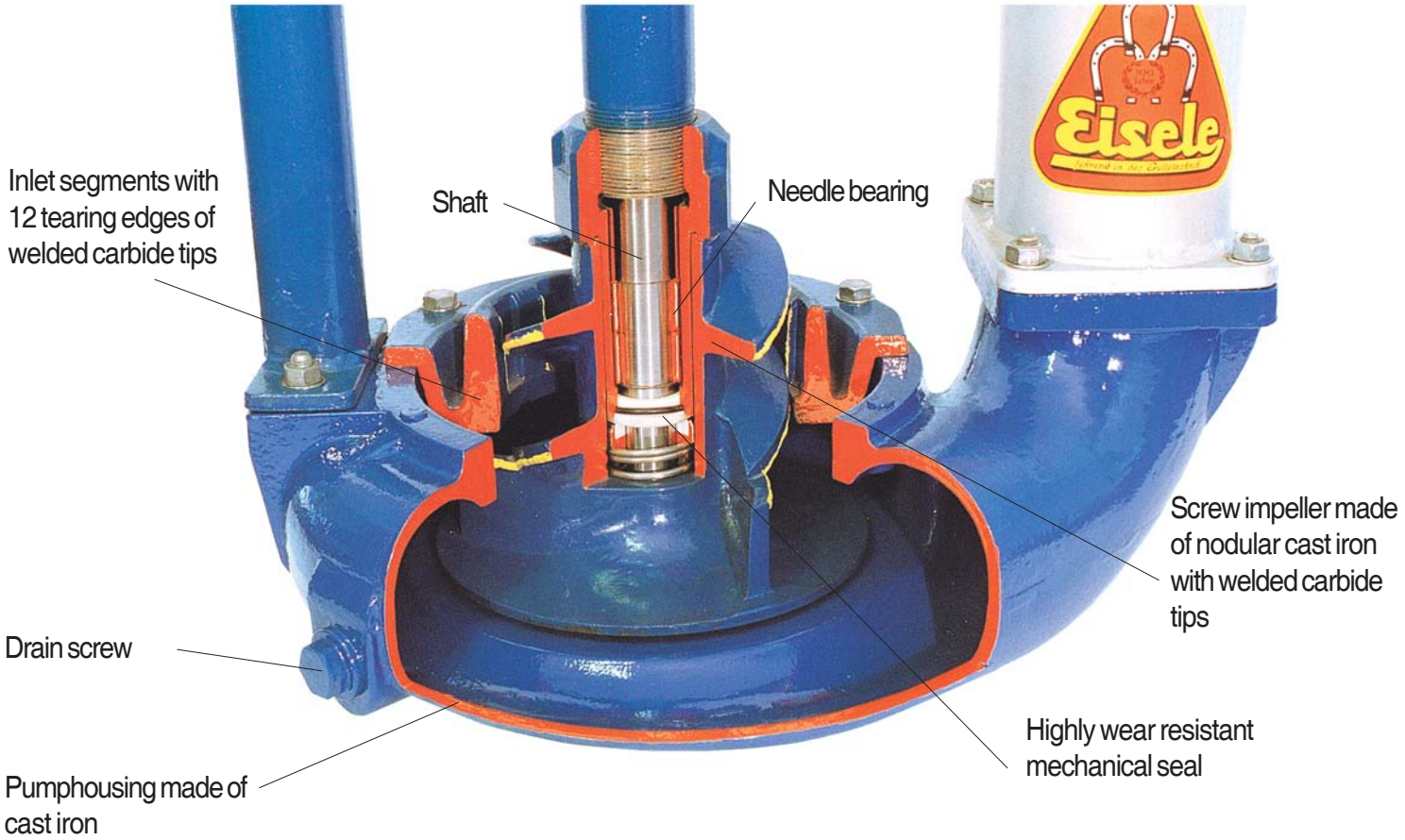
Discharge bend 60° or 90° with 360° swivel



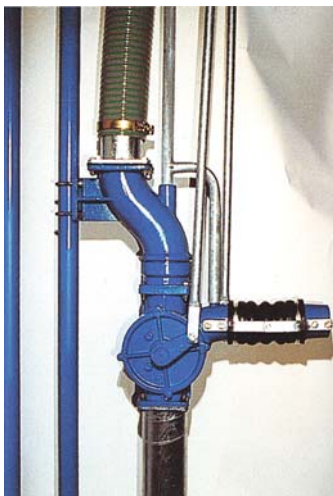
Screw impeller with welded chop blades (additional price)

Optional extras (on request)

- 2nd mixing nozzle
- Motor-gearbox combination: gearbox with through shaft for electrical motor. For subsequent assembly
- 2nd discharge coupling for tanker filler pipe or flushing line
- Pump mounting sets for assembly at a wall or on the pit cover, for openings up to 0.9 m
- Tanker filler pipe up to 6.0 m
- Automatic pump control boxes
- Additional chop blades on screw impeller for extremely long fibres
- Various universal joint shafts
- Airation with injector
- Rear facing handling lever



Variations



Type VMU / VGU with underfloor discharge



Type VRM / VRG with notch coupling for flushing lines with EISELE- electrical motors (11.0 - 22.0 kW) or EISELE-gearbox



V-Pump with tractor lift attachment and winch assembly

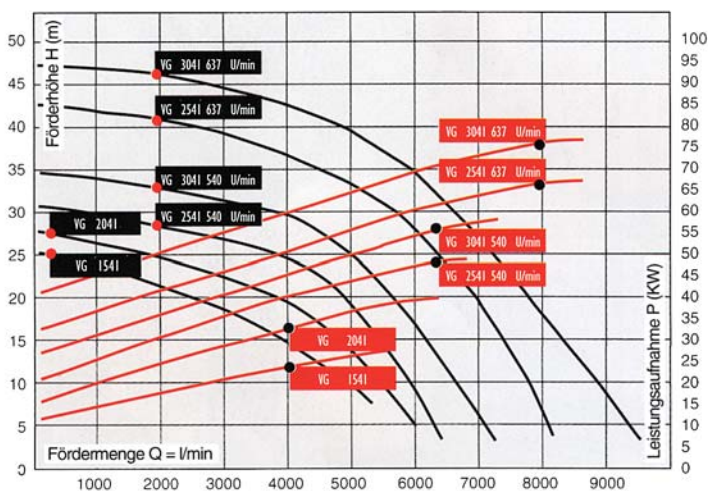


Type VKM / VKG replaces the reception pit, up to 4 connections

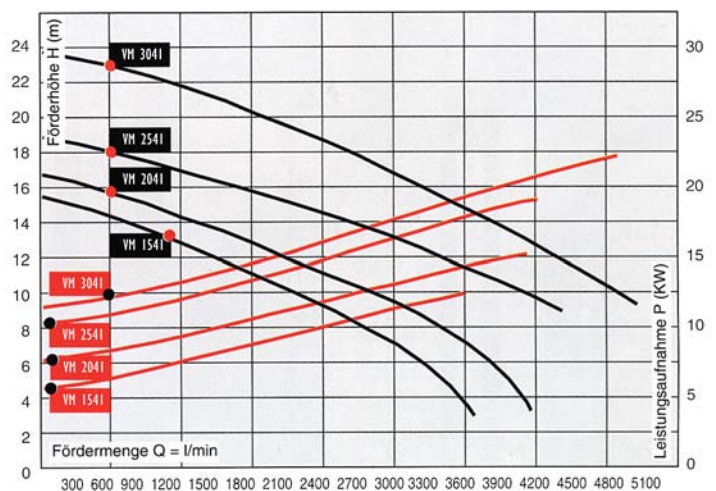
Technical data:

Type	VM VMU1541	VM VMU2041	VM VMU2541	VM VMU3041	VG VGU1541	VG VGU2041	VG VGU2541	VG VGU3041
Performance kW/hp	11/15	15/20	18,5/25	22/30				
Performance kW/hp at 540 rpm					24/33	33/45	45/61	55/75
Performance kW/hp at 637rpm							65/88	75/102
Capacity max. l/min	3900	4300	5400	6000				
max. at 540 rpm					6100	6500	6900	7500
max. at 637 rpm							8500	10000
Total head	16 m	17 m	21 m	24 m	25 m	27 m	42 m	47 m

Performance curves



— Q - P (Performance)
— Q - H (Capacity)



Some applications for EISELE- vertical pumps:

Agriculture / Purification plants / Biogas plants / Mud-baths / Slaughter houses / Gravel wash plants / Building sites / Pig farm-liquid feeding / Paint factory- mixing and pumping of paint waste / Reducing ground water / Potteries

Further information on any of the EISELE- products, contact our sales office:

Pumps mobile-stationary / Lobe pumps / Pumps with EISELE-submersible motor mobile-stationary / Mixers with EISELE-electrical motors, with PTO drive, hydraulic drive / Stainless steel silos or corrugated and hot galvanized steel silos / Vacuum, lobe and centrifugal pump tankers up to 23500 l / Contractor pumps self priming / Accessories for biogas and purification plants

The company reserves the right to make technical alterations



Franz Eisele u. Söhne
GmbH u. Co. KG
Pumps and Engineering Works
D - 72488 Sigmaringen - Laiz
Tel. +49(0)7571 109-0
Fax +49(0)7571 109-88
www.eisele.de info@eisele.de